

Verbena

Jennie Atkinson

Difficulty Level



Materials

YARN

Rowan Fine Milk Cotton

A Apple Pips 482

8 8 9 9 10 10 11 11 x 50gm

B Tutti Frutti 487

1 1 1 1 1 1 1 1 x 50gm

C Shrimps 483

1 1 1 1 1 1 1 1 x 50gm

D Midget Gem 497

1 1 1 1 1 1 1 1 x 50gm

NEEDLES

1 pair 2¼mm (no 13) (US 1) needles

1 pair 2½mm (no 12) (US 2) needles

BUTTONS – 8 x small mother of pearl buttons

TENSION

30 sts and 38 rows to 10 cm measured over
rev st st using 2½mm (US 2) needles.

Size

	8	10	12	14	16	18	20	22	
To fit bust									
	81	86	91	97	102	107	112	117	cm
	32	34	36	38	40	42	44	46	in

Instructions

BACK

Using 2½mm (US 1) needles and yarn A cast on 131 [137: 143: 153: 161: 171: 179: 189] sts.

Row 1 (RS): P2 [2: 2: 1: 2: 1: 2: 1], *K1,

P2, rep from * to last 0 [0: 0: 2: 0: 2: 0: 2] sts, (K1, P1) 0 [0: 0: 1: 0: 1: 0: 1] times.

Row 2: K2 [2: 2: 1: 2: 1: 2: 1], *P1, K2, rep from * to last 0 [0: 0: 2: 0: 2: 0: 2] sts, (P1, K1)

0 [0: 0: 1: 0: 1: 0: 1] times.

These 2 rows form rib.

Cont in rib for a further 24 rows, ending with RS facing for next row.

Change to 2½mm (US 2) needles.

Beg and ending rows as indicated, now work in patt from chart for 12 rows, ending with RS facing for next row.

Beg with a P row, now work in rev st st until back meas 32 [32: 31: 34: 33: 35: 34: 36] cm, ending with RS facing for next row.

Shape raglan armholes

Cast off 6 sts at beg of next 2 rows.

119 [125: 131: 141: 149: 159: 167: 177] sts.



R O W A N

Dec 1 st at each end of next 1 [3: 5: 15: 15:

25: 29: 39] rows, then on 2 [0: 0: 0: 0: 0: 0: 0] foll 4th rows, then on

every foll alt row until 43 [43: 43: 43: 47: 47: 47: 47] sts rem.

Work 1 row, ending with RS facing for next row.

Cast off.

LEFT FRONT

Using 2½mm (US 1) needles and yarn A cast on 67 [70: 73: 78: 82: 87: 91: 96] sts.

Row 1 (RS): P2 [2: 2: 1: 2: 1: 2: 1], *K1, P2, rep from * to last 5 sts,

(K1, P1) twice, K1.

Row 2: (P1, K1) twice, *P1, K2, rep from * to last 0 [0: 0: 2: 0: 2: 0: 2] sts, (P1, K1) 0 [0: 0: 1: 0: 1: 0: 1] times.

These 2 rows form rib.

Cont in rib for a further 23 rows, ending with WS facing for next row.

Row 26 (WS): Rib 6 and slip these 6 sts onto a holder, M1, rib to end. 62 [65: 68: 73: 77: 82: 86: 91] sts.

Change to 2½mm (US 2) needles.

Beg and ending rows as indicated, now work in patt from chart for 12 rows, ending with RS facing for next row.

Beg with a P row, now work in rev st st until left front matches back to beg of raglan armhole shaping, ending with RS facing for next row.

Shape raglan armhole

Cast off 6 sts at beg of next row.

56 [59: 62: 67: 71: 76: 80: 85] sts.

Work 1 row.

Dec 1 st at armhole edge of next 1 [3: 5: 15: 15: 25: 29: 39] rows, then on 2 [0: 0: 0: 0: 0: 0: 0] foll 4th rows, then on foll 19 [22: 23: 16: 18:

13: 11: 6] alt rows, ending with WS facing for next row.

34 [34: 34: 36: 38: 38: 40: 40] sts.

Shape neck

Cast off 9 [9: 9: 8: 10: 10: 9: 9] sts at beg of next row. 25 [25: 25: 28: 28: 28: 31: 31] sts. Dec 1 st at raglan armhole edge of next and foll 10 [10: 10: 12: 12: 12: 14: 14] alt rows **and at same time** dec 1 st at neck edge of next 7 rows, then on foll 4 alt rows, then on 1 [1: 1: 2: 2: 2: 3: 3] foll 4th rows. 2 sts.

Work 1 row, ending with RS facing for next row.

Next row (RS): P2tog and fasten off.

RIGHT FRONT

Using 2½mm (US 1) needles and yarn A cast on 67 [70: 73: 78: 82: 87: 91: 96] sts.

Row 1 (RS): (K1, P1) twice, *K1, P2, rep from * to last 0 [0: 0: 2: 0: 2: 0: 2] sts, (K1, P1)

0 [0: 0: 1: 0: 1: 0: 1] times.

Row 2: K2 [2: 2: 1: 2: 1: 2: 1], *P1, K2, rep from * to last 5 sts, (P1, K1) twice, P1.

These 2 rows form rib.

Row 3 (RS): Rib 2, yrn, P2tog (to make a buttonhole), rib to end. Cont in rib for a further 13 rows, ending with RS facing for next row.

Row 17 (RS): As row 3.

Cont in rib for a further 8 rows, ending with WS facing for next row.

Row 26 (WS): Rib to last 6 sts, M1 and turn, leaving rem 6 sts on a holder. 62 [65: 68: 73: 77: 82: 86: 91] sts.

Complete to match left front, reversing shapings.

SLEEVES

Using 2½mm (US 1) needles and yarn A cast on 71 [71: 75: 75: 77: 77: 81: 81] sts.

Row 1 (RS): P2 [2: 1: 1: 2: 2: 1: 1], *K1, P2, rep from * to last 0 [0: 2: 2: 0: 2: 2] sts, (K1, P1) 0 [0: 1: 1: 0: 0: 1: 1] times.

Row 2: K2 [2: 1: 1: 2: 2: 1: 1], *P1, K2, rep from * to last 0 [0: 2: 2: 0: 2: 2] sts, (P1, K1)

0 [0: 1: 1: 0: 0: 1: 1] times.

These 2 rows form rib.

Cont in rib for a further 24 rows, ending with RS facing for next row.

Change to 2½mm (US 2) needles.

Beg and ending rows as indicated, now work in patt from chart as follows: Inc 1 st at each end of next [next: 3rd: 3rd: 3rd: 3rd: next: next] and foll 1 [1: 0: 0: 0: 0: 1: 1] alt rows, then on 2 foll 4th rows, taking inc sts into rev st st. 79 [79: 81: 81: 83: 83: 89: 89] sts.

Work 1 row, ending after chart row 12 and with RS facing for next row.

Beg with a P row, now work in rev st st, shaping sides by inc 1 st at each end of 3rd and every foll 4th row until there are 113 [113: 117: 117: 121: 121: 125: 125] sts.

Cont straight until sleeve meas 33 [33: 34: 34: 35: 35: 34: 34] cm, ending with RS facing for next row.

Shape raglan

Cast off 6 sts at beg of next 2 rows.

101 [101: 105: 105: 109: 109: 113: 113] sts.

Dec 1 st at each end of next 3 rows, then on every foll alt row until 29 sts rem.

Work 1 row, ending with RS facing for next row.

Left sleeve only

Dec 1 st at each end of next row. 27 sts.

Cast off 6 sts at beg of next row, then dec 1 st at beg of foll row. 20 sts. Rep last 2 rows once more. 13 sts.

Cast off 5 sts at beg of next row. 8 sts.

Dec 1 st at neck (cast-off) edge of next 4 rows **and at same time** dec

1 st at back raglan edge of next and foll alt row. 2 sts.

Right sleeve only

Cast off 6 sts at beg and dec 1 st at end of next row. 22 sts.

Work 1 row.

Rep last 2 rows once more. 15 sts.

Cast off 5 sts at beg and dec 1 st at end of next row. 9 sts.

Dec 1 st at neck (cast-off) edge of next 5 rows **and at same time** dec

1 st at back raglan edge of 2nd and foll alt row. 2 sts.

Both sleeves

Next row (RS): P2tog and fasten off.

MAKING UP

Press as described on the information page.

Join all raglan seams using back stitch, or mattress stitch if preferred.

Button band

Slip 6 sts from left front holder onto 2½mm (US 1) needles and rejoin yarn A with RS facing.

Cont in rib as set until button band, when slightly stretched, fits up left front opening edge to neck shaping, ending with RS facing for next row.

Break yarn and leave sts on a holder.

Mark positions for 8 buttons on this band – first 2 to come level with buttonholes already worked in right front, 3rd button level with chart row 3, top (8th) button to come just above neck shaping, 7th button to come

2.5 cm below beg of neck shaping, and rem 3 buttons evenly spaced between 3rd and 7th buttons.

Buttonhole band

Slip 6 sts from right front holder onto 2½mm (US 1) needles and rejoin yarn A with WS facing.

Cont in rib as set until buttonhole band, when slightly stretched, fits up right front opening edge to neck shaping, ending with RS facing for next row and making a further 5 buttonholes to correspond with positions marked for buttons on left front as follows:

Buttonhole row (RS): Rib 2, yrn, P2tog (to make a buttonhole), rib 2. When band is complete, do NOT break yarn.

Slip stitch bands in place.

Neckband

With RS facing, using 2½mm (US 1) needles and yarn A, rib 6 sts of buttonhole band, pick up and knit 38 [38: 38: 41: 43: 43: 46: 46] sts up right side of neck, 23 sts from top of right sleeve, 43 [43: 43: 43: 47: 47: 47] sts from back, 23 sts from top of left sleeve, and 38 [38: 38: 41: 43: 43: 46: 46] sts down left side of neck, then rib 6 sts of button band. 177 [177: 177: 183: 191: 191: 197: 197] sts.

Row 1 (WS): P1, *K1, P1, rep from * to end.

Row 2: K1, P1, yrn, P2tog (to make 8th buttonhole), K1, *P1, K1, rep from * to end.

Row 3: As row 1.

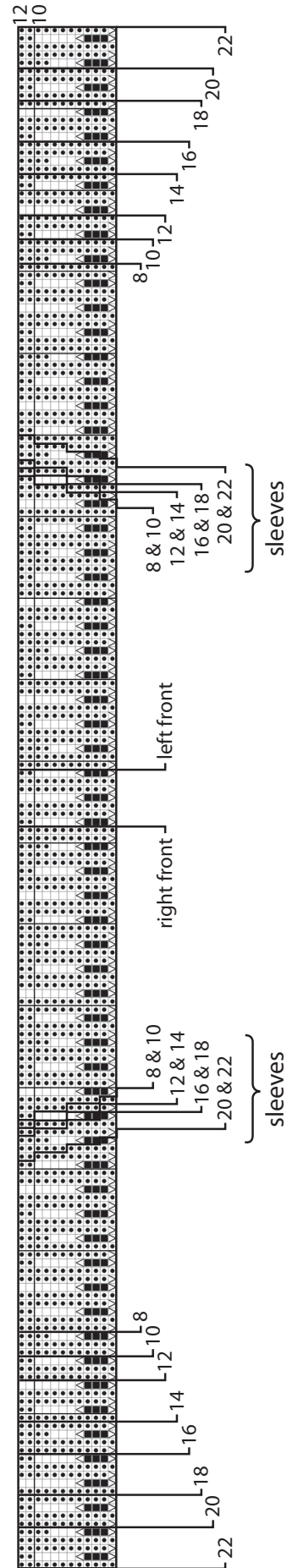
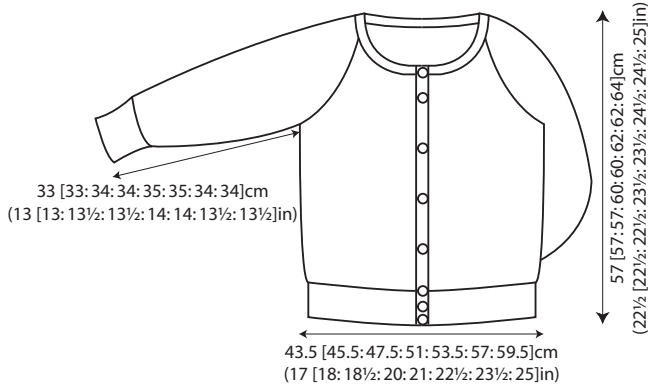
Row 4: K1, *P1, K1, rep from * to end.

Row 5: As row 1.

Cast off in rib.

See information page for finishing instructions.

Using photograph as a guide and yarns B, C and D, embroider 3 french knots radiating out from top of each K st of chart row 12 on back, fronts and sleeves.



- key
- K on RS, P on WS
 - P on RS, K on WS
 - K3 on RS, P3 on WS
 - (P1, K1) into next st, (K1, K1 tbl) into next st (only to be worked on groups of 2 consecutive sts - work single sts as)
 - sl1, k2tog, pss0