

Witch Socks

Size 5 ½ / 6 and 8 ½ / 9 ½

Directions for the smaller size are before the stroke, with larger size behind. If there is only one figure, it applies to all sizes.

Materials

Regia 4-fädig, 50 g each #1988 lavender, #2041 yellow and quality **Regia 4-fädig Color**, 50 g #1937 Funny red.

2 size 0-3 [2-3 mm] sets double-pointed needles, **or size to obtain gauge**, and one blunt tapestry needle.

Accessories

2 iron-on “witch” appliqués.

Jacquard pattern

Work st-st in Jacquard technique foll charts. Rep motif of 4 sts. throughout. Work rounds 1-7 and rounds 28-34 once.

Gauge

30 sts. and 43 rows/rounds Jacquard patt, each to 4” [10 cm]. Change needle size if necessary to maintain gauge.

Method

For 1st roll edge cast on 44/48 sts. yellow and work 10 round st-st. Slip all sts. onto a holder. For 2nd roll edge cast on 44/48 sts. Funny red and work 8 rounds st-st. Bring 2nd roll edge over 1st roll edge and K 1 off front needle tog with 1 off back needle throughout. Then work in st-st rounds 1-7 foll chart, 16/20 rounds lavender, and rounds 28-34 foll chart = 30/34 rounds = about 2 ¾ “ / 3 ¼ “ [7/8 cm]. Work heel and foot in Funny red foll sock guide. Iron a witch onto the outside of each sock. Embroider rem lavender panels with French knot in yellow (see also photo).



Charts

1	2	3	4	5	6	7	7
1	2	3	4	5	6	7	6
1	2	3	4	5	6	7	5
1	2	3	4	5	6	7	4
1	2	3	4	5	6	7	3
1	2	3	4	5	6	7	2
1	2	3	4	5	6	7	1
1	2	3	4	5	6	7	34
1	2	3	4	5	6	7	33
1	2	3	4	5	6	7	32
1	2	3	4	5	6	7	31
1	2	3	4	5	6	7	30
1	2	3	4	5	6	7	29
1	2	3	4	5	6	7	28

Colors

- = 1 st. Funny red
- = 1 st. yellow
- = 1 st. lavender

Fair isle Socks

Size 8 ½ / 9 ½ and 11 ½ / 12 ½

Directions for the smaller size are before the stroke, with larger size behind. If there is only one figure, it applies to all sizes.

Materials

Regia 4-fädig Color, 50 g #1937 Funny red; quality **Regia 4-fädig**, 50 g each #1988 lavender, and #2041 yellow.

Size 0-3 [2-3 mm] double-pointed needles, **or size to obtain gauge**, and one blunt tapestry needle.

Welt pattern alt K1, P1.

Jacquard pattern

Work in st-st foll charts. Rep motif of 4 sts. throughout. For leg work rounds 1-21 once, and rounds 6-16/21 once = 32/37 rounds. For foot rep rounds 1-7 throughout.

Gauge

30 sts. and 43 rows/rounds Jacquard patt, each to 4" [10 cm]. Change needle size if necessary to maintain gauge.

Method

Cast on 48/52 sts. yellow and work 8 rounds = about ¾" [2 cm] st-st for roll edge. In Funny red K 1 round and work ½" [1.5 cm] welt patt, then 32/37 rounds = about 3 / 3 ¼ [7.5/8.5 cm] Jacquard patt.

Work heel and foot foll sock guide. Work foot in Jacquard patt, and toes in Funny red.

Embroider French knots in yellow onto leg foll chart.



Chart for leg

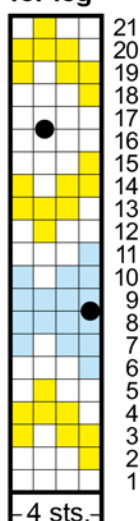
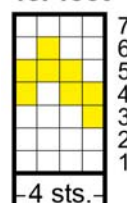


Chart for foot



Colors

- = 1 st. Funny red
- = 1 st. lavender
- = 1 st. yellow
- = 1 French knot in yellow