

Patchwork bag

Size approx. 36 x 26 cm (14 x 10 inches)

Materials

5 balls Anchor Style Creativa 1 ball of col. 253 and col. 295, 3 balls of col. 206
You will need: 1 crochet hook, size 4.0 mm (UK 8/ US F/5)

Colour placement for crocheted squares:

Rnds 1 + 2 in col. 295

Rnd 3 in col. 253

Rnds 4 + 5, pointed edge, and handles in col. 206

Tension swatch: 1 square = 8 x 8 cm (3 1/4 x 3 1/4 inches)

Instructions: Crochet 24 squares, following CC and with colour placement as given above. In the last rnd, connect squares with slst to form two bag pieces of 3 x 4 squares each.

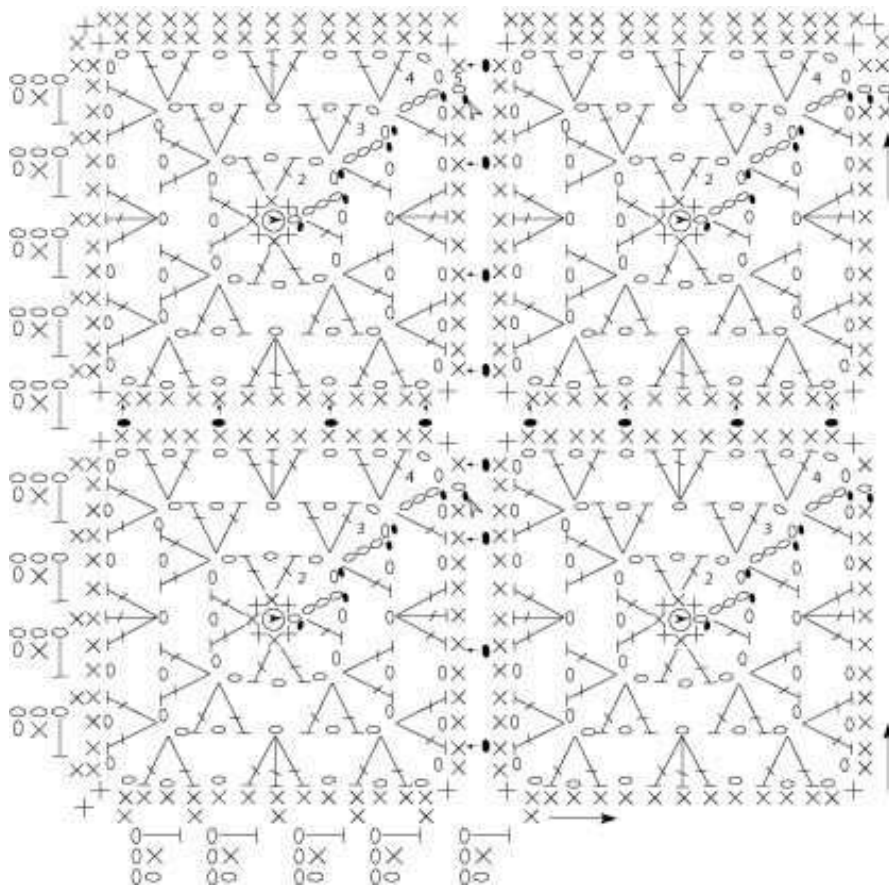
On one long edge of each bag piece (= upper edge of bag), crochet 1 row of dc. Lay the two bag pieces together, wrong sides facing.

Crochet together along 3 sides, working the pointed edge as shown in the CC.

Make 2 handles. For each handle, crochet 5 ch + 3 ch to turn. Then work rows of tr to reach a length of approx. 28 cm (11 inches).

Finishing: Sew handles to bag pieces.





-  Begin
-  End
-  1 slip stitch
-  1 chain
-  1 double crochet
-  1 half treble
-  1 treble
-  thread ring
-  direction of crochet