

Cable slippers

Materials

Quality Regia Silk, 150 g #05 mottled linen. 4-5 mm [size 5-8] doublepointed needles, and one 4 mm [size F/5] crochet hook, or size to obtain gauge. Accessories: Regia leather soles size 38/39.

Rib pattern: alt K1, P1.
Stockinet stitch (st-st): K RS rows; P WS rows; in rounds K all sts.

Cable: see chart. All rounds are given. Work round 1 once, then rep rounds 2-11 throughout for patt.
Gauge: 20 sts. and 28 rows/rounds st-st with the double yarn, each to 4" [10 cm].

Method

Cast on 44 sts. with the double yarn using the invisible cast-on method and work 10 cm rib patt. Cont in st-st. Work cable foll chart over the last 7 sts. on needle 2 and over the first 7 sts. on needle 3, inc 2 sts. on 1st round as given = 46 sts.

When work measures 10 cm from ribbing work heel over sts. on needles 1 and 4.

For foot cont in st-st over sts. on needles 1 and 4, and in patt over sts. on needles 2 and 3.

Work toes in st-st, working K2 tog twice over cable sts. on 1st round = 44 sts.

Work both socks alike.

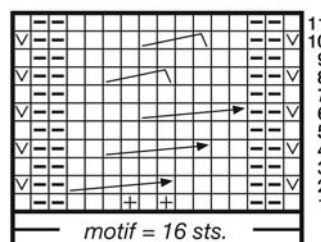
Now crochet on the soles as foll: first widen the prepunched holes in the soles with a knitting needle. Then bring the double yarn through with the crochet hook from inside to outside of sole, work 1 ch, then crochet 2 sc into each hole; end round with 1 sl-st into 1st ch. Sew socks to soles using backstitch. Turn ribbing half out.

Abbreviations

alt alternate/ly
ch chain
patt pattern
rem remaining/remainder
sep separately
st-st stockinette stitch
tbl through back of loop
tog together



Chart and Legend



- = K1
- ▢ = P1
- ⊞ = make 1 knitwise tbl
- ⊞ = slip 1 purlwise, yarn at back of work
- ⊞ = slip 2 onto a CN and leave at back of work, K2, then K2 from CN
- ⊞ = slip 2 onto a CN and leave at back of work, K4, then K2 from CN

Table for Socks using Regia 8faedig or the double yarn Regia Silk

Gauge: 20 sts. and 28 rows/rounds stockinet stitch, each to 10 cm [4"] on 4-5 mm [size 5-8] needles.

Size	32/33	34/35	36/37	38/39	40/41	42/43	44/45	46/47
Stitch cast-on/sts. per needle	40/10	40/10	44/11	44/11	48/12	48/12	52/13	52/13
no. of sts. for heel	20	20	22	22	24	24	26	26
no. of sts. for round heel	6/8/6	6/8/6	7/8/7	7/8/7	8/8/8	8/8/8	8/10/8	8/10/8
length of foot from center heel to toes (cm)	17	18	19	20,5	21,5	22,5	23	24,5
decrease for toes after 1st dec on 3rd round	1x	1x	1x	1x	1x	1x	1x	1x
on every 2nd round	3x	3x	3x	3x	4x	4x	4x	4x
on every round	3x	3x	4x	4x	4x	4x	5x	5x
Total length of foot (cm)	21	22	23,5	25	26,5	27,5	28,5	30