

## Kids Eco Sweater with Crochet Circles

### Difficulty Level



### Materials

#### YARN

#### PATONS YARN REQUIRED

ECO COTTON 50g balls

Garment pictured is in colours #90 (pale gray), #10 (bark), #35 (rose), #71 (khaki) and #05 (sand)

Main colour (M) - pale gray	4	5	6
1st contrast (C1) - bark	1	1	1
2nd contrast (C2) - rose	1	1	1
3rd contrast (C3) - khaki	1	1	1
4th contrast (C4) - sand	1	1	1

Use only the yarn specified - other yarns may give different results.

Quantities are approximate as they can vary between knitters.

Check the ball bands to ensure all yarn is from the same dye lot.

#### NEEDLES AND EXTRAS

3.00mm (11 UK) (3 US) Circular Knitting Needle 60 cm long and a set of 3.00mm (11 UK) (3 US) Double Pointed Needles or size needed to give correct tension.

2.5mm (12 UK) (C/2 US) Crochet Hook.

A Cable Needle.

A Wool Needle for sewing seams.

#### TENSION -

**With Correct Yarn and Tension, your garment will look like the photograph.**

**23.5 sts and 32 rows to 10 cm over basic pattern, using 3.00mm Needles.**

To work a 15 cm x 15 cm tension square, use 3.00mm Needles, cast on 36 sts.

Work 48 rows basic pattern by working 12 sts of chart motif 3 times, reading right side rows from chart and working wrong side rows in sts as they appear.

Cast off.

Check your tension carefully.

If less sts use smaller needles, if more sts use bigger needles.

**Each crochet circle measures approx 3 cm across.**

### Size

Years	1½-2	3-4	5-6	
To Fit Chest	53-56	58-61	65-66	cm
	21-22	23-24	25½-26	in
Actual Size (approx at underarm)	65	71	76	cm
	25½	28	30	ins
Length (approx)	45	49	53	cm
	17½	19½	21	ins
Sleeve length (approx)	9	9	9	cm
	3½	3½	3½	ins



### Instructions

#### CROCHET CIRCLES

Using 2.50mm Hook, make 6ch, join with a sl st in first ch to form a ring.

**1st round** - 1ch, 10dc (US sc) in ring, sl st in ch at beg.

**2nd round** - 1ch, 2dc in each dc of previous round, sl st in ch at beg. Join all foll crochet circles with a sl st.

#### BACK AND FRONT

(Worked in one piece to armholes)

Work 66 (72-78) crochet circles in the various colours, join tog forming 3 circles in height and 22 (24-26) circles in width and join into a round.

Using 2.50mm Hook and M, work crochet band along one side edge of the circles as foll -

**1st round** - Make 3ch, sl st into first circle, \* 6ch, sl st into foll circle, rep from \* to end, 3ch, sl st into first ch at beg of round.

**2nd round** - 1ch, 1dc in each st to end, sl st into 1ch at beg.

**3rd round** - 3ch, miss 1dc, \* 1tr (US dc) in next dc, 1ch, miss 1dc, rep from \* to end, sl st into 2nd of 3ch at beg.

**4th round** - 1ch, 1dc in each st to end, sl st into 1ch at beg.

Using 3.00mm Circular Needle and M, knit up one st into back leg of each dc along Back and Front panels ... 154 (168-182) sts.

**Size 1½-2 years only - Next round** - K1, M1 knitways, K77, M1 knitways, knit to end.

**Size 5-6 years only - Next round** - K1, K2tog, K89, K2tog, knit to end.

**All sizes** - 156 (168-180) sts.

Knit 2 (3-2) rounds.

**Beg basic pattern** - Commence working from chart, reading odd numbered rounds from right to left and working even numbered rounds in sts as they appear, as foll -

**1st round** - Work sts 1 (4-1) to 12 incl of motif, work 12 sts of motif 13 (13-15) times, work first 0 (3-0) sts motif.  
Cont working from chart as set until completion of 20th row.  
Last 20 rounds form patt.  
Cont in patt until work measures 20 (23-26) cm from crochet band, ending with an odd numbered row of chart.

#### SHAPE ARMHOLES -

**Next round** - Patt 74 (80-85), cast off next 8 (8-10) sts, patt 70 (76-80), sl last 70 (76-80) sts on a stitch holder, cast off next 8 (8-10) sts.  
Cont in **rows** over next 70 (76-80) sts for **BACK**.  
Work 1 row patt.  
Cast off 2 sts at beg of next 2 rows, then one st at beg of foll 4 (6-6) rows ... 62 (66-70) sts.  
Cont in patt without shaping until **armhole** measures 12 (13-14) cm, working last row on wrong side.

#### SHAPE BACK NECK -

**Next row** - Patt 22 (23-24), cast off next 18 (20-22) sts, patt to end.  
Cont on these 22 (23-24) sts.  
Work 1 row patt.  
\*\* Cast off 3 sts at beg of next row, then 2 sts at beg of foll alt row ... 17 (18-19) sts.  
Work 1 row patt.  
Cast off. \*\*  
With wrong side facing, join yarn to rem sts.  
Work as for completed side from \*\* to \*\*, working 1 row more before casting off for shoulder.

With right side facing, patt across sts from stitch holder for **FRONT**.  
Cast off 2 sts at beg of next 2 rows, then one st at beg of foll 4 (6-6) rows ... 62 (66-70) sts.  
Work 2 (0-2) rows patt.

#### DIVIDE FOR NECK OPENING -

**Next row** - Patt 30 (32-34), cast off next 2 sts, patt to end.  
\*\*\* Cont on these 30 (32-34) sts.  
Cont in patt until **armhole** measures 7 (7-8) cm, working last row on wrong side.

#### SHAPE NECK -

Keeping patt correct, cast off 6 (7-8) sts at beg of next row ... 24 (25-26) sts.  
Work 1 row patt.  
Cast off 3 sts at beg of next row, 2 sts at beg of foll alt row, then one st at beg of every foll alt row twice ... 17 (18-19) sts.  
Cont in patt without shaping until **armhole** measures same as Back to shoulder, ending with same patt row as Back.  
Cast off. \*\*\*  
With wrong side facing, join yarn to rem sts.  
Work as for completed side from \*\*\* to \*\*\*, working one row **more** before shaping neck.

#### SLEEVES

Work 8 (9-10) crochet circles in the various colours and join into a line.  
Using 2.50mm Hook and M, work crochet band along one side edge of the circles as foll -  
**1st row** - Make 4 (5-4) ch, sl st into first circle, \* 6ch, sl st into foll circle, rep from \* to end, 4ch, **turn**.  
**2nd row** - 1ch, 1dc in each st to end.  
**3rd row** - 3ch, miss 1dc, 1tr (US dc) in next dc, \* 1ch, miss 1dc, 1tr in next dc, rep from \* to end.  
**4th row** - 1ch, 1dc in each st to end.  
Using 3.00mm Circular Needle and M, knit up one st into back leg of each dc ... 58 (66-72) sts.

#### Work in rows, not rounds.

Work 3 rows stocking st, beg with a purl row.  
**Beg basic pattern** - Commence working from chart, reading odd numbered rows from right to left and working even numbered rows in sts as they appear, as foll -  
**1st row** (right side) - K1, work sts 6 (8-5) to 12 incl of motif, work 12 sts of motif 4 (4-5) times, work first 1 (11-2) sts of motif, K1.  
Cont working from chart until work measures 4 cm from crochet band, working last row on wrong side.

#### SHAPE TOP -

Keeping patt correct, cast off 5 (5-6) sts at beg of next 2 rows, then 2 sts at beg of foll 2 rows ... 44 (52-56) sts.  
**Next row** - K2, K2tog, patt to last 4 sts, sl 1 knitways, K1, pssso, K2.  
Work 1 row patt.  
Rep last 2 rows until 12 (18-18) sts rem, working last row on wrong side.  
Cast off.

#### NECK EDGING

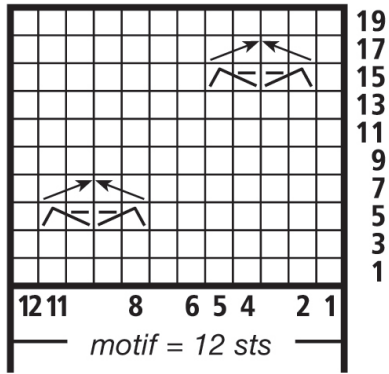
##### Patons recommends using Mattress Stitch Seam

Using wool needle, join shoulder seams.  
With right side facing, using 2.50mm Hook and M, join yarn to lower edge of front opening with a sl st and work around neck and front opening edges as foll -  
**1st row** - Work 1 row dc, working 3dc into upper corners of front opening.  
**2nd row** - 2ch (turning ch), \* 1tr in next dc, 1ch, miss 1dc, rep from \* to corner, work (1tr, 1ch, 1tr, 1ch, 1tr) into corner st, rep from \* to next corner, work (1tr, 1ch, 1tr, 1ch, 1tr) into corner st, rep from \* to end, 1tr in last dc.  
**3rd row** - 1ch (turning ch), 1dc in each st to end.  
Fasten off.

#### MAKE UP

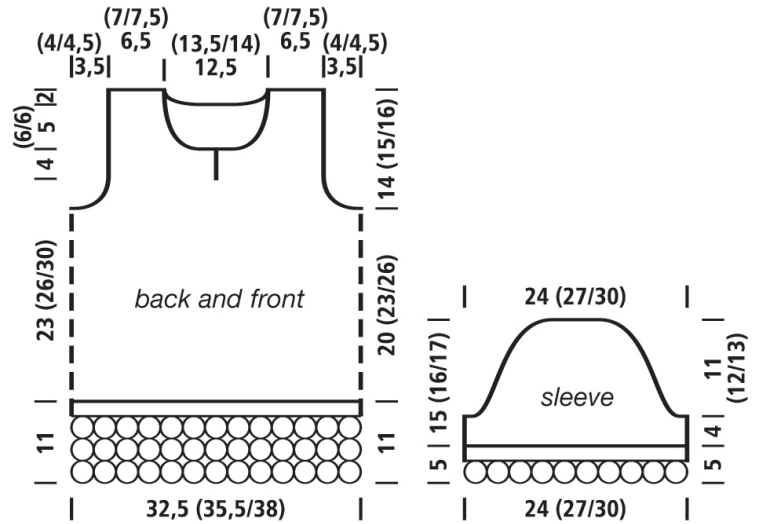
With a slightly damp cloth and warm iron (unless stated otherwise on ball band), press lightly on wrong side. Using wool needle, join sleeve seams. Sew in sleeves. Overlap neck edging at lower edge of front opening and sew in position.  
**Cord** - Using 2.50mm Hook and C1, make a ch cord approx 110 (115-120) cm long. Commencing at centre front, thread cord through tr round at top of crochet band of Front and Back. Make 2 more circles, 1 in each C2 and C3, then sew circles to ends of cord.  
Sew in ends. Press seams.

## Chart for Basic Pattern



### Legend

- = K1
- ☐ = slip 1 onto a CN and leave at back of work, K1, then P1 from CN
- ☐ = slip 1 onto a CN and leave at front of work, P1, then K1 from CN
- ☐ = slip 1 onto a CN and leave at back of work, K1, then K1 from CN
- ☐ = slip 1 onto a CN and leave at front of work, K1, then K1 from CN



12